

Marta Memo: Argentina to Athens

Sharing a South-American tradition: Mate:



Dear Sisters,

I have been in close contact with Diane and see that you have all been very active moving along DKG business – for that, I am endlessly grateful.

- Although I have visited Argentina many times since we moved to the U.S., never before have I stayed for this long. The protracted time has allowed me to experience again most of the customs I grew up with.
- One of them is drinking mate, so instead of discussing DKG, this will be a brief description of this widespread custom. please note the word has no written accent, although the spoken word is accentuated on the first syllable. (Maté is sometimes erroneously used to refer to this beverage, but in Spanish, it means “killed”; first person singular, past tense).
- The mate set-up is a dried gourd, filled with the crushed-dried leaves of yerba mate. Very hot water is poured on the yerba mate, and it is instantly ready to drink. The yerba mate is a South-American plant, relative of the holly – Scientific name: *ilex paraguariensis*. It grows in Argentina’s north-east, Chile, Brazil, Paraguay and Uruguay – These countries share the mate tradition, although each one has it, perhaps, in a different way. Argentinians typically drink it hot, but in Paraguay and particularly in Uruguay, they also drink it cold, as a beverage named “tereré”.
- Mate is sipped from a metallic straw, the “bombilla”, placed in the gourd prior to filling it with yerba mate. The feature that horrifies non-practitioners is that there is only one straw, and it is shared by all who are drinking in the mate round. Having mate is almost a ceremony between friends and family. Friends chat during a round of mate – once it is filled, you just have to pour hot water, and sip it – no extra effort. I remember the comfort of wrapping my hands around the warmth of the gourd during winter. (Even better, be mischievous, and add cognac or other spirits against the cold!). Mate is the cherished college companion of countless pre-exam all-nighters. Its caffeine content, almost the same as coffee’s, provides the energy and clarity of mind to pull-through the night.
- In the same way as smoking the calumet in the American Indian tradition meant dropping barriers to end hostilities, in Argentina, sharing mate with someone is a token of trust; the opportunity to tell secrets, exchange ideas and build lasting relationships.
- Hope the rains have ended in Athens and given way to the much-expected sunshine. It is hot and steamy here.

Wishing you the best,
Love always,
Marta

In the pictures: (lower) Sharing mate with my mom, Nélica Giménez, (Nina to family) and (top) an assortment of mates in my mom’s household.



Virginia Macagnoni Grant-in-Aid Presentation



Virginia Macagnoni presenting the first Grant-in-Aid check to Rachel Rotz, Collegiate member of Beta Sigma

January 29, 2020 Beta Sigma held a fun luncheon at Hilltop Grille, Athens for Virginia, a founding member of Beta Sigma, to present Rachel, our first collegiate member, with a Grant-in-Aid check for \$400. Rachel is a UGA Geology PhD candidate.



Those attending from front to back:
 Left: Jane, France, Audrey, Rachel, Virginia, Gwen, Patti.
 Right: Sandra, Carolyn H., Evelyn, Diane, Beverly, Barbara, Linda

Story about Rachel from Geology news:
<https://geology.uga.edu/news/stories/2019/rachel-rotz-receives-key-women-educator-award>

Our own COVER GIRL!

Dr. Freda Giles, Beta Sigma, OLLI cover girl is on the far right.

What's Inside?

- Registration Guide Page
- Course Listing Page
- Free Courses Page
- Social Events Page
- Alphabetic Course Listing With Descriptions Page
- Course Calendar Page
- Luncheons Page
- OLLI/UGA - Misc Page

**NEW VOTING
MACHINES
Information**

Go to: SecureVoteGA.com

Beta Sigma website is now linked on the GSO website:

<https://dkggso.weebly.com/>

Beta Sigma Founding Member Focus

Dr. Mary Jim Combs-Tate

Mary Jim Combs Tate was born and raised in Carrollton, Georgia, on December 13, 1933. The youngest of three girls, she was called Jimmy until she started school. Mary Jim attended the Carrollton City schools, even though she lived outside the city limits, because her parents felt they were better than the county schools. Her mother made all of her clothes until she graduated high school, leading to her interest in Home Economics (and learning to sew.) As soon as she received her driver's license, she began driving the neighborhood kids to school in her mother's Model A. She was in the last graduating class (1951) before 12th grade was added.



Mary Jim completed two years at West Georgia College and finished her teaching degree in home economics at Georgia College for Women. She interviewed with the superintendent of the Cedartown schools in her parents' home in Carrollton. After two years of teaching Home Economics in Cedartown, she continued her career in Carrollton for the next 9 years. During that time, she spent weekends and summers pursuing her master's degree.

Professors at UGA encouraged Mary Jim to pursue her doctorate, which she did. Upon completion of this degree, she accepted a position at UGA where she spent the next 27 years.

Mary Jim met Curt Tate in the lobby of the Lyons Apartments where they both lived. She says it "took a long time to get married." She became stepmother to his two sons, Milton and Emory. Curt passed away in 2010. Milton passed away in 2012. Milton has twin daughters. Emory and his wife live in Virginia. They have three children, one of whom graduated from the Air Force Academy in Colorado. Mary Jim has three nephews, whom she entertains at Christmas when they are able to come.

Fellow teachers in her years in Carrollton, Miss Rooks and Miss Johnson, invited Mary Jim to become a member of Delta Kappa Gamma. When she came to UGA, she became one of the *founding members of Beta Sigma*. Mary Jim has been in Delta Kappa for close to 60 years and has served in multiple positions, including President and Corresponding Secretary.

Mary Jim says she still has places she would like to visit. She has been to the Holy Land, Italy, the Panama Canal, and Portugal as well as many US points of interest. When asked, "what is your favorite place?," her quick response was, "home."

She is a treasured member of Beta Sigma with a wealth of knowledge on the "nuts and bolts" of the organization.

Barbara McConnell

Audrey Hughes



Science & Energy Team (SET)

The **Science & Energy Team's mission is to promote resource conservation in the school and community.** The Science & Energy Team is a competitive team that meets on Wednesday afternoons in coordination with the 21st Century Community Learning Center and independently to develop and maintain projects that support our mission. Each year the team participates in a state and a national level competition in which similar teams showcase their work for the school year. The competition is organized by the National Energy Education Development (NEED) Project. Since its founding 40 years ago, NEED has kept its Kids Teaching Kids philosophy as a fundamental principle of NEED programming – encouraging students to explore, experiment, engage, and encouraging teachers to embrace student leadership in the classroom.

Some of the projects that the team is involved in this year are listed below:

Hilsman Middle School's Green School Program

Keep Athens-Clarke County Beautiful Green School Kick-Off

Athens Water Festival, Trick or Treat for UNICEF, America Recycles Day, Trash Hunger Campaign

Keep Athens-Clarke County Beautiful Christmas Tree Recycling, Energy Awareness Month

CCSD Young Scientist's Day Station with Energy Conservation Facts & Games

Energy & Conservation Fair at Family Science Night,

Volunteer Work at the Food Bank

National Energy Education Week, Earth Week

STEM Class



The middle school **Science, Technology, Engineering, and Mathematics (STEM)** Course provides all students with an introduction to the principles of Engineering and Technology and its place in the modern world. Students are educated on the daily impact of engineering and mathematics and the nature of science and technology. Students use the design process and experimentation to solve a variety of problems. Students participate in design challenges to understand how criteria, constraints, and processes affect designs. Students participate in activities that allow them to gain experience in brainstorming, visualization, modeling, construction, testing, experimentation, and refining designs. Students also develop skills in researching for information and communicating design information. Exploring Engineering and Technology reinforces the areas of math, science, social studies, and language arts through practical application and hands-on design challenges. Exposure to Science, Technology, Engineering, and Mathematics related careers, work ethics, and leadership skills are important components of this course.



Marta Patiño-Douce sharing an experiment with Hilsman students



Audrey Hughes and her students being honored by Governor Nathan Deal, Atlanta, GA.

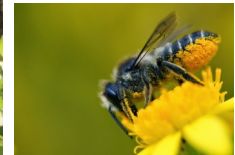
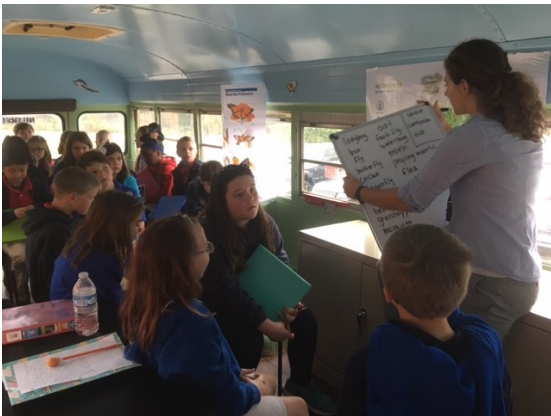
BIO S.T.E.A.M.

Outdoor Learning Center

Liz French

The BioSTEAM Program is a new initiative to incorporate environmental education into the *Jefferson City school system*. As the BioSTEAM Coordinator, my work includes visiting classrooms for hands-on lessons, developing fun programs for teachers to use with their classes, planning community events and conservation projects, and managing the school system's 177 acre wetland property for field trips and student research.

I also teach Plant Science and Forest Science classes at the high school level. A few of our big projects for Spring 2020 include installing a beehive for student learning by our new pollinator garden, planning Arbor Day Tree Celebration projects to become a certified K-12 Tree Campus, and a Family Day Art Show at the wetlands property that will feature multiple different speakers and student art.





**2020-2022 Officers to be installed at the
April 4th Meeting**

President: Diane Lutz
First Vice President: Evelyn Wood
Second Vice President: Mary Burton
Recording Secretary: Beverly Tuttle
Corresponding Secretary: Elizabeth French
Treasurer: Carolyn Ashley
Parliamentarian: Jane Kelly

Beta Sigma Meetings

March 24th @ 3 PM - Chapter Meeting
State Botanical Gardens Alice Richards Children's Garden.
Cora Keber, Director of Education
State Botanical Gardens of Georgia;
GSO District II Director Gwen White will join us.

April 4th @ 11:30 Athens Country Club
Beta Sigma Luncheon and Installation of officers
GSO state president, Kathy Brown will join us.

GSO Meetings

Leadership Officer Training: April 17-19
Warner Robins Middle School, Warner Robins, GA

State Meeting Leadership Seminar I: June 5-7
Macon, GA
application - <https://tinyuri.com/LeadershipI2020>

DKG - Day At the Capitol- Feb 26th

Dark and early, Evelyn Wood, Jane Kelly, and Diane Lutz were chauffeured to the capitol building in Atlanta by Diane's son, Paul. The sun came up as the bright gold dome came into view. After climbing steps into the building we were greeted by security and screened. Since we were one of the first groups to arrive we waited for the other 11 ladies from across the state. A group picture was taken before we took an elevator to the fourth floor. The Senate was not in session at the time, so we moved to the House where we were seated in the gallery. We watched as roll

call was taken electronically and the session was opened with introductions, prayer, and the pledge of allegiance. Many bills that were completed in committee were read into the House record. We were able to have lunch at the Twin Towers before we were to meet with representatives to discuss education concerns. Unfortunately, there had been a combined House/Senate meeting that ran long and we were unable to meet with them. The clouds and rain drops rolled in as we rode back to Athens. It was a long but enjoyable day spent with DKG sisters.



Delta Kappa Gamma
visits the Capitol



Georgia House of Representatives
Chambers

LEAP DAY Luncheon February 29th at Hilltop Grille

Beta Sigma members presented \$600 to Audrey Hughes for the SET program at Hillsman Middle School. Audrey's students participate in State and National competitions organized by the National Energy Education Develop (NEED) Project. She will be taking students to compete in June.



Audrey shared that she received \$720 from *The Elise Boylston Foundation*. We're proud of you! Keep up the great work teaching and inspiring students.



Having a good time together at the Leap Day luncheon: *From front to back: Left side: Sandy Gardner, Beverly Tuttle, Diane Lutz, Evelyn Wood, France Boney, Gwen Hartman, Virginia Macagnoni Right side: (guest) Ari Fischer, Audrey Hughes, Barbara McConnell, Carolyn Ashley, Carolyn Howell, and (guest) Betsy Lubs.*



We're proud of Audrey and Liz for the programs they are doing with their students.

The Beta Sigma Chapter also presented \$400 to Liz French for the BioSTEAM program she coordinates with the Jefferson school system.

